

APS2-6R 6.0 Amp Auxiliary Power Supply

General

The APS2-6R is a state-of-the-art, 150 watt, switching auxiliary power supply providing 24 VDC of filtered DC power. The APS2-6R provides three 24 VDC output circuits, rated for 6.0 Amps in alarm and 4.0 Amps continuous. It is used for the operation of peripheral audible/visual devices (alarm signaling appliances) for the Onyx Series control panels.

The APS2-6R can also be used with Legacy panels. Please refer to the APS2-6R manual for more information.

Features

- UL 864 Ninth Edition compliant
- Lightweight, compact design
- 120 or 220/240 VAC (@ 50/60 Hz) versions
- Output circuits with overload protection
- Built-in “brown-out” circuitry
- Diagnostic trouble LED
- Plug-in connector for in-cabinet applications and screw terminals for remote device applications
- Trouble supervision bus
- Shares battery and charger circuit with control panel
- Power-limited design, per UL requirements
- AC Fail supervision and reporting with field-selectable delay per UL 864
- Heavy-duty clamp-type terminals accept up to 12 AWG (3.1 mm²) wire
- Battery voltage supervision
- Low battery disconnect
- Mounts in a standard CAB-3/XLS-ADT-CAB-4 Series cabinet.

Construction and Operation

When used with the CAB-3 or CAB-4 Series (CAB-A3/A4, -B3/B4, -C3/C4, or -D3/D4 one to four tiers), the APS2-6R mounts to a CHS-4 or CHS-4L mounting chassis. If more than one APS2-6R is necessary to satisfy Audible/Visual (DC) power requirements, connect additional APS2-6R power supplies together as described in the Installation Instruction Manual #53232.

Underwriters Laboratories requires that all Signaling Appliances be approved for use with the selected control system due to voltage operating range criteria. Use only those appliances listed for use with the associated control system. Refer to Device Compatibility Document #15378.

Specifications

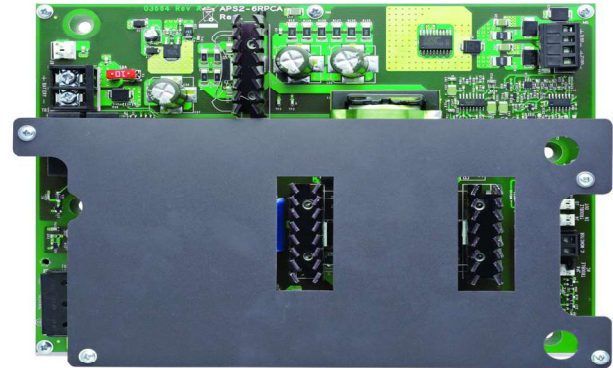
ELECTRICAL SPECIFICATIONS

AC primary input power (TB1): APS2-6R: 120 VAC, 50/60 Hz, 2.9 A., APS2-6RE : 220-240 VAC, 50/60 Hz, 1.5 A.

DC secondary input power (TB3): TB3-1 (+), TB3-2 (-).

24 VDC output power (TB2): Total 6.0 A (4.0 A continuous). Circuit 1 (TB2-1, TB2-2): 3.0 A @ 24 VDC power-limited. Circuit 2 (TB2-3, TB2-4): 3.0 A @ 24 VDC power-limited.

24 VDC output power (J9): 6.0 A (4.0 A continuous), Non-Power Limited.



APS2-6R

Relay Contacts (TB4): AC Fail supervision over the SLC.

Fuse: (F2 battery supervision): 32 VAC, 10.0 A, Fast-Acting Automotive Minifuse.

Trouble supervision bus:

- J3 output: Form-A contact (open collector).
- J4 input: Form-A contact (open collector).

J3 and J4 can be interchanged.

Loss of AC indication:

Immediate indication (default); 1-2 hour delay (cut JP2); 2-3 hour delay (cut JP2 and JP3).

MECHANICAL SPECIFICATIONS

The APS2-6R measures approximately 8.625" (21.91 cm) x 6.625" (16.83 cm) x 2.375" (6.03 cm) and weighs approximately 2 lbs (0.91kg).

Cabinet for Mounting

CAB-3/XLS-ADT-CAB-4 Series: Use CHS-4 and CHS-4L chassis, for NFS2-3030, NFS2-640, AM2020, AFP1010, NFS-3030, NFS-640, AFP-400, AFP-300, and System 5000 control panels.

Product Line Information

APS2-6R: 24-volt, filtered power supply (120 VAC input).

APS2-6RE: 24-volt, filtered power supply (220-240 VAC input)

EOLR-1: 12/24 VDC end-of-line relay.

CHS-4: Four-module chassis.

CHS-4L: Four-module chassis (low-profile).

R-47K: End of Line Resistor Assembly

Installation Standards and Codes

This power supply complies with the standards set forth by the following regulatory agencies:

NFPA Standards

- NFPA 72 National Fire Alarm Code

Underwriters Laboratories:

- UL 864 Standard for Control Units and Accessories for Fire Alarm Systems

In addition, the installer should be familiar with the following standards:

- NEC Article 300 Wiring Methods
- Applicable Local and State Building Codes
- Requirements of the Local Authority Having Jurisdiction
- The Canadian Electrical Code, Part 1

Agency Listings and Approvals

The listings and approvals below apply to the basic APS2-6R. In some cases, certain modules may not be listed by certain approval agencies, or listing may be in process. Consult factory for latest listing status.

- UL/ULC S635
- FM Approved
- CSFM: 7315-0028:248
- FDNY: COA #6028



This document is not intended to be used for installation purposes.
We try to keep our product information up-to-date and accurate.
We cannot cover all specific applications or anticipate all requirements.
All specifications are subject to change without notice.

©2019 by Honeywell International Inc. All rights reserved. Unauthorized use of this document is strictly prohibited.

NOTIFIER

12 Clintonville Road
Northford, CT 06472
203.484.7161
www.notifier.com

Country of Origin: USA

