

Hd IP camera operating instructions

Dear customer, welcome to use this product, before using this product, please read the operation instructions in detail, and save this manual for future reference.

I、Realize your HD card type IPC.



II、 Interface definition and wiring diagram

Network interface: suitable for accessing network using network cable.

W I F I antenna: receive WIFI signal;

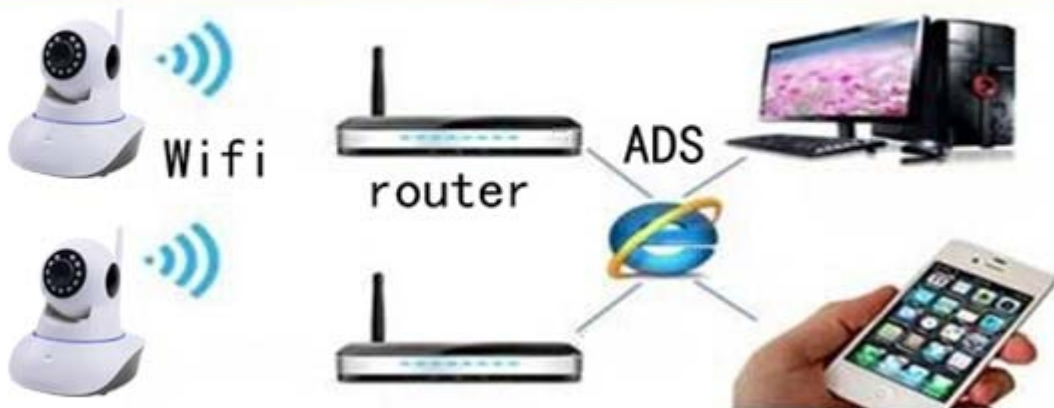
Memory card socket: insert memory card,support 32G:device can stock video/picture;

Power supply interface; connect power supply adapter (only support DC5V,2A input) ;

Connection mode 1:LAN connection



Connection mode 2: Wan connection




III、 Mobile phone software operation

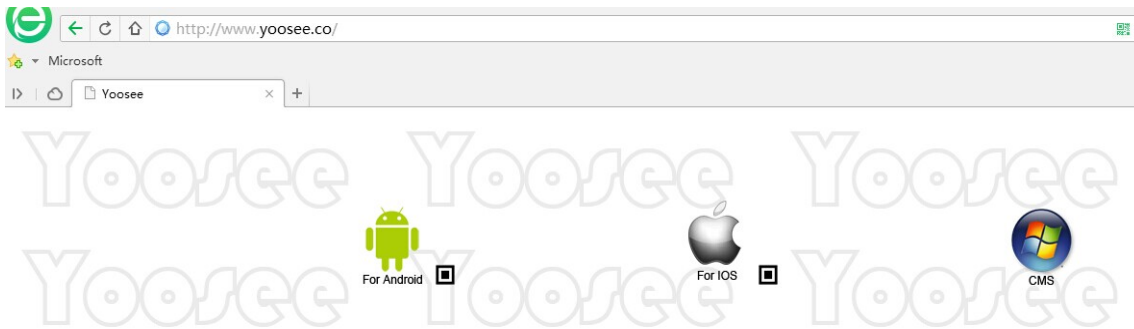
For better experience the convenience that brought by this product , please download mobile phone software before using this product:

1、 Mobile phone software download:

1) IOS user can download and install Yoosee in Apple official shop

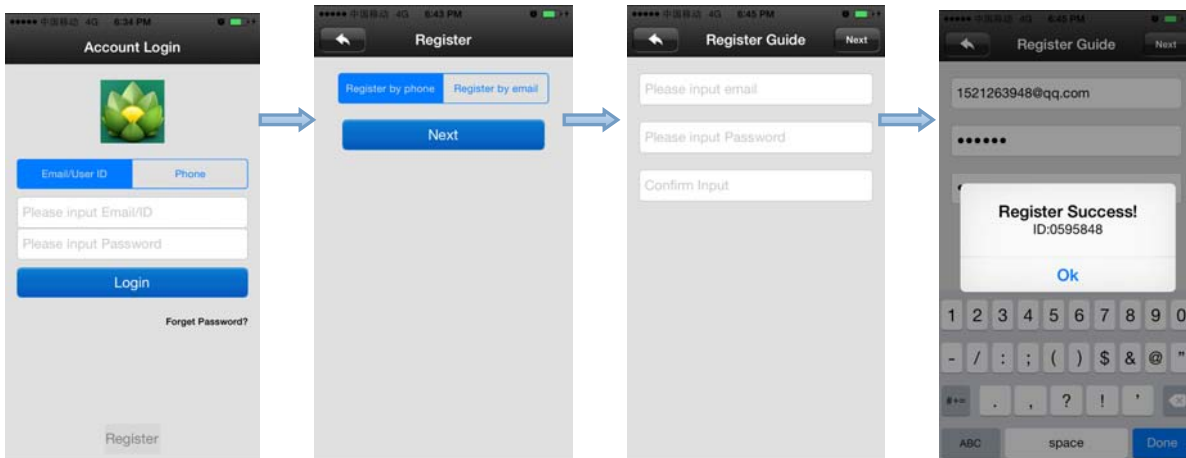
- 2) Android user can enter website :<http://yoosee.co> ,download and install Yoosee
- 3) Also can input <http://yoosee.co/> in the explorer to download it in PC, Android version and IOS version can scan the QR code to download the software directly,

PC click  to download directly.



2、 Mobile phone ID register

Note: first open the “Yoosee” software , user need register one ID as the following: |



- ①、 choose the right under “register” to enter
- ②、 choose “mobile phone register” or “email register” , click “next”
- ③、 input email box and password,click “next”(the email register no need verification code ,register it directly; the mobile phone register,the verification code will be sent to the phone by message.)
- ④、 if register successfully,it will show “congratulations,register successfully”,and the

system will distribute one ID to you automatically at the same time. please remember this ID, it can be used as the user name, click "confirm", input the password you set just now again, then you can log in normally.

3、 Mobile phone network connection

There are two ways for connecting device to network:

1) **Wired connection:** after the camera power on, connect one end of the cable to the camera, the other end to the router LAN port (please be sure the router open the DHCP function), the network light will be normally on after connection successfully.

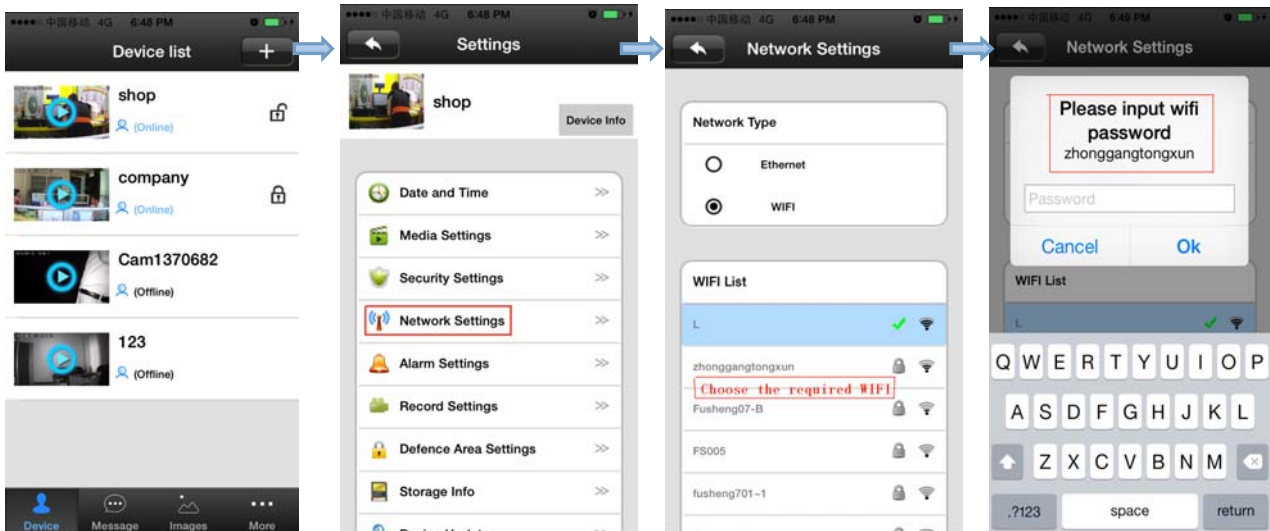
2) **WIFI connection:** the users can follow the below ways if they want to start using WIFI to get connection with the camera when the camera is wired connection:

A、 please add the device to the Yoosee device list: "Add device", please view the fifth part for the detail steps.

B、 open Yoosee software, 1、 choose "device", click device name, choose "settings";

2、 choose "network settings" 3、 **(please don't choose "WIFI" directly at the moment) the following will search all of the WIFI signal near it**

automatically, choose your WIFI ID 4、 input WIFI password, open wifi successfully.

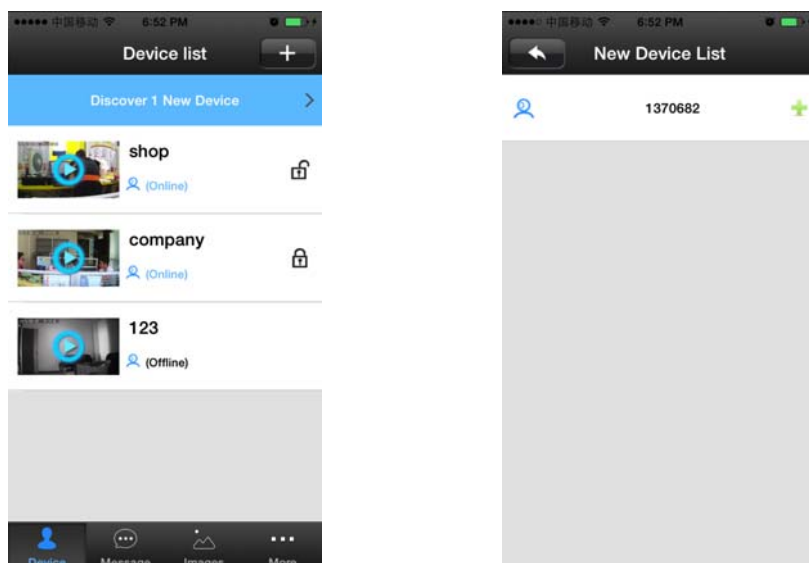


C、set WIFI by “intelligent online”：【details refer to 4、add device on mobile phone》2)】

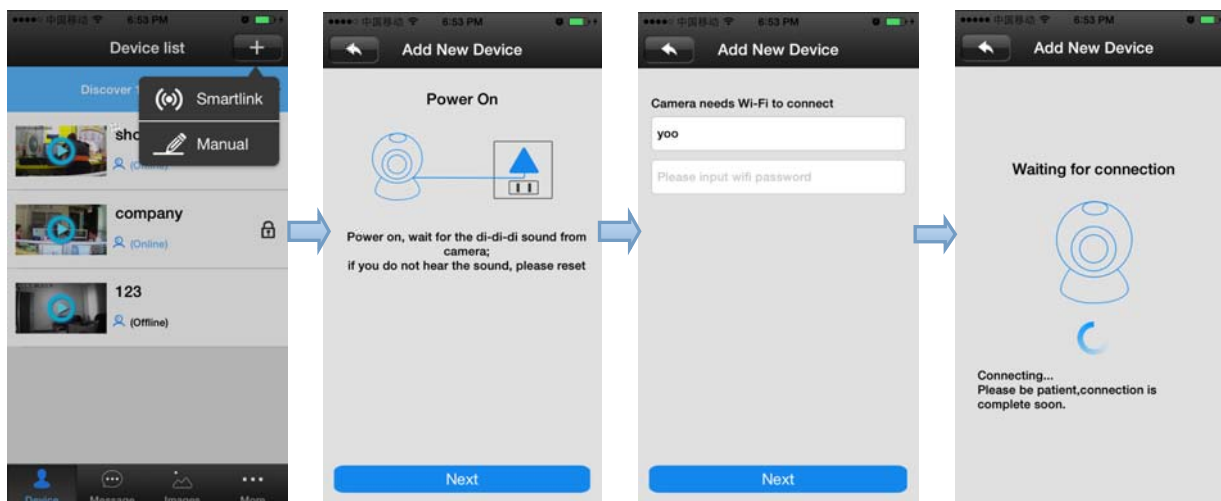
4、Add device on mobile phone

How to add the device to device list:

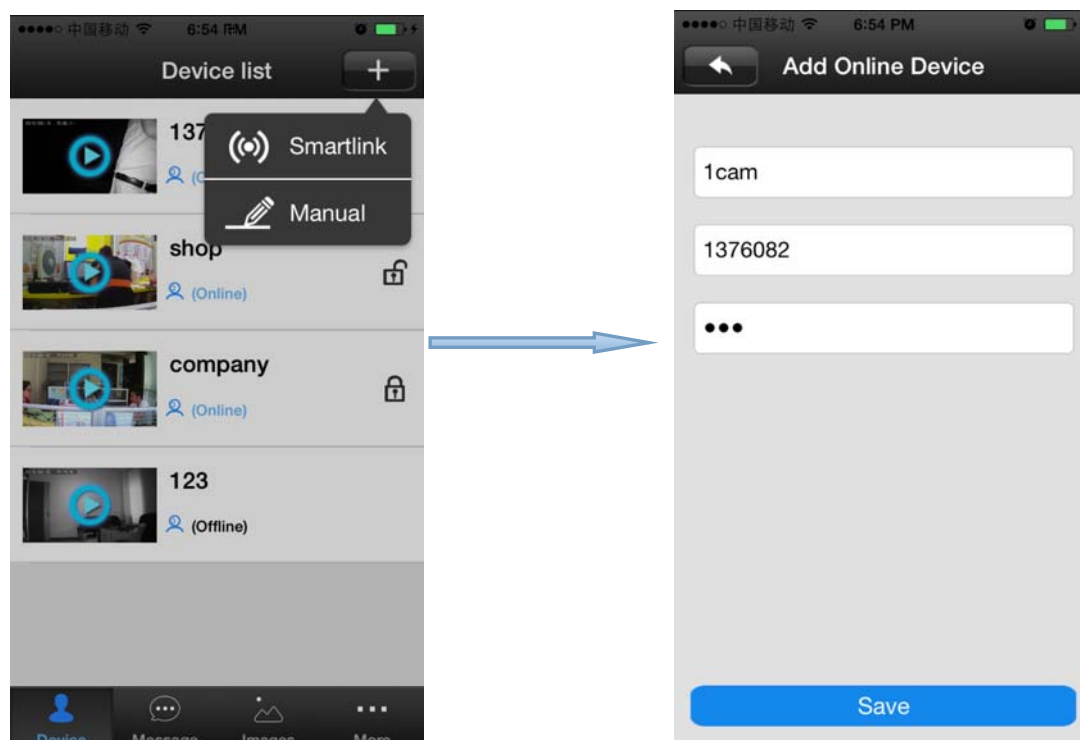
1)、In the device list interface of the “Yoosee” software, when the camera is in network and the phone is in the same WIFI, both of them are in one LAN, the software will find all the devices automatically, and only need choose ,add and set the access password is ok.



2) 、 intelligent online: open the Yoosee software,click “Device”,choose the“ +”button ,choose “intelligent online”,click next and then choose the WIFI and WIFI password you need,click the “next” again ,connect the device.



3) 、 Add device manually: in the device interface of the Yoosee software,click the “+” ,input ID and password is ok.



5、 The device monitor of mobile phone

1) 、 contact person: click the device icon that has been added in device list to entry the monitor mode .

6、 The video settings of mobile phone.

1) 、 Video: this device supports 32GB TF card in max ,if need record video,please insert the memory card at first,and then open the Yoosee :click Device ->Device name ->settings->video settings,user can choose record video manually ,alarm video, timing video.

2) 、 playback: this device support playback in mobile phone,open the Yoosee software:click Device->Device name->playback, user can find the playback files according to the date, then play it directly .

7、 Mobile phone zone settings

1) 、 Alarm learning code.

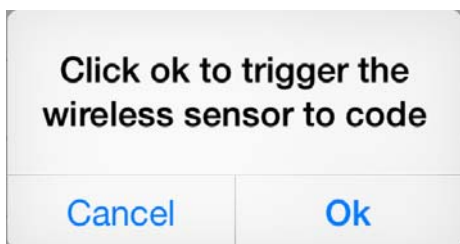
Note: this function is optional,please be sure your device has this function.

This device with 8pcs remote control ,8*8=64pcs wireless

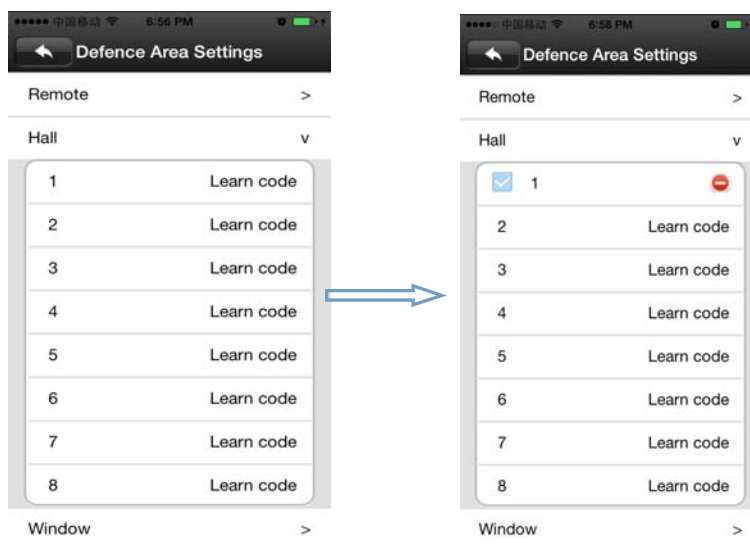
alarm(433frequency),support 8 groups.

The following is the learning code ways:

- A、 Please add device to device list in Yoosee software.
- B、 Click Device->device name->settings->zone settings
- C、 Eg:you want to learn one door sensor that installed in the hall,the serial number is 1.Click “Hall”-click number 1,pop-up:




Click “confirm”, and trigger the alarm you will learn at the same time(take the door sensor as example,separate the door sensor will trigger the alarm).if match code successfully,the words will be turn blue from gray,and will pop-up :learn successfully”.



- D、 Back to device list interface ,click the right lock key of the device, “🔒” means Arming, “🔓” means disarming, the alarm will be effective if mach code successfully after arming 15secs.

- E、 “remote caontrol” is special designed for alarm remote control ,the

ways of matching code is the same as “A、B、C”, the function is equal to the right key  of the device list in the Yoosee software, it can be used as “arming,disarming”, but it need match with the device learning .

2) 、 delete match code : click the access number that had learned,confirm delete is ok.

3) 、 alarm settings:

Arming: there are two ways :one is through the press the infrared remote control arming key(lock key) that has learned successfully ;two is the arming keys (lock key) in the back of the APP contact list, after arming ,when there is a case, the device will send the alert to the APP actively , and send the scene captured images to the alarm mail at the same time.

Push account,alarm mail:Click on the device name - > settings - > alarm settings: add receiving alert APP ID in binding account (open Yoosee software,can be found after clicking on the first"settings" button from right in the lower, can add up to five account), alarm write the receiving alarm email address.

Motion detecting: alarm as soon as the scene change.

Buzzer: open the buzzer, when have alert the device itself will sirens screaming until "disarming".

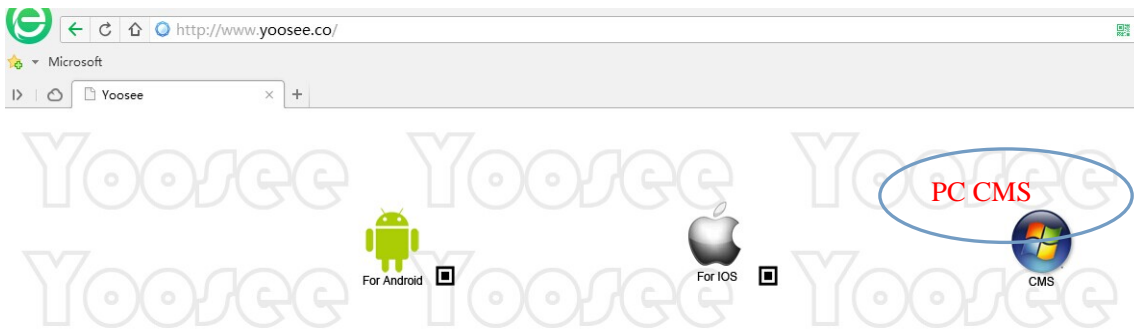
8、 Device upgrading

Click contact names - > Settings - > check device update: click on the new version number,it will remind the new version number if have the new version ,and the user can choose whether to upgrade

IV、 The software operation in PC

1、 Download software to PC

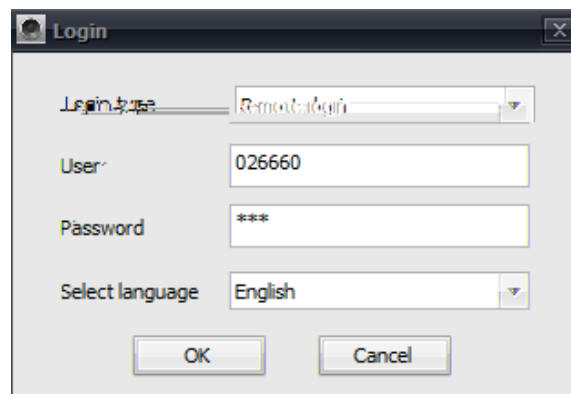
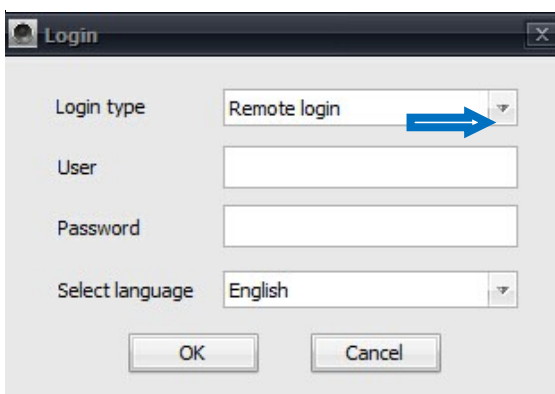
1)、 input <http://yoosee.co/> in the PC explorer ,click the icon  to download directly.



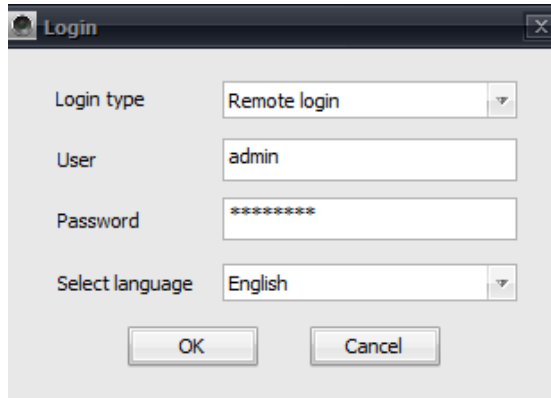
图片文字翻译： 电脑软件： PC software

2、 log account in PC

A、 there are two ways to log in, select "remote login" ,use the ID(email/phone number/Yoosee account ID) that register in mobile phone to login directly, no need to register again.




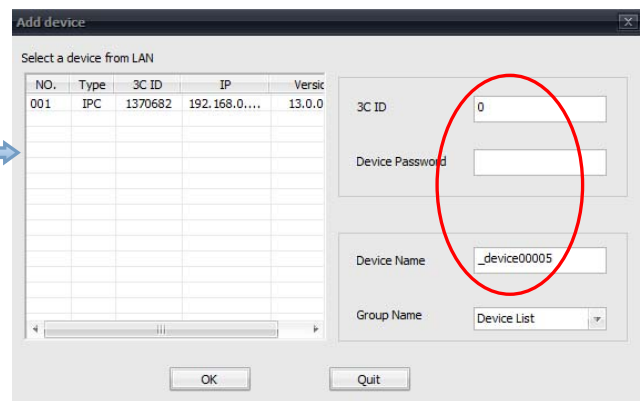
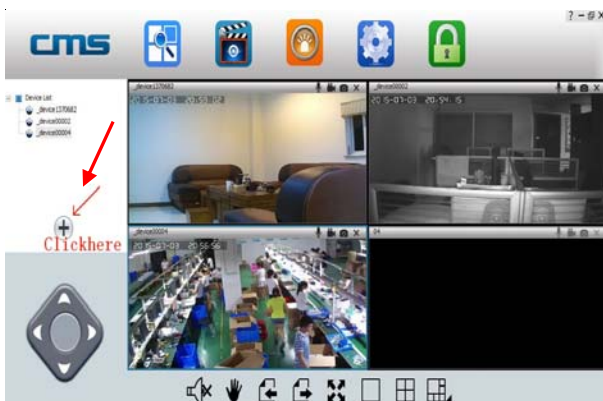
B、 when the PC software choose “Log on locally ” , the account is: admin
password: 00000000



3、 Computer terminal network connection (the same as mobile phone software operation three ", 3)

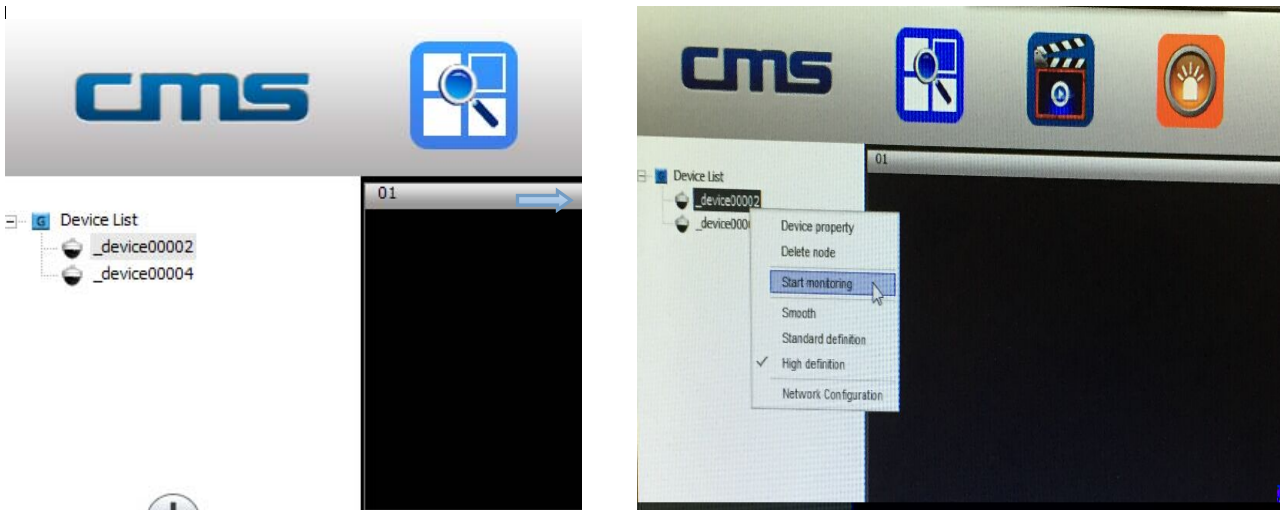
4, Add device to PC.

How to add device to the device list?In fact, there are many kinds of ways to achieve,specific methods, please refer to:1) 、 In the left side of the "CMS" software interface, click the button  , input device name and ID and password and click ok:



5、 Device monitor in PC.


Open CMS software, right click device name ->start monitor, as the following picture:



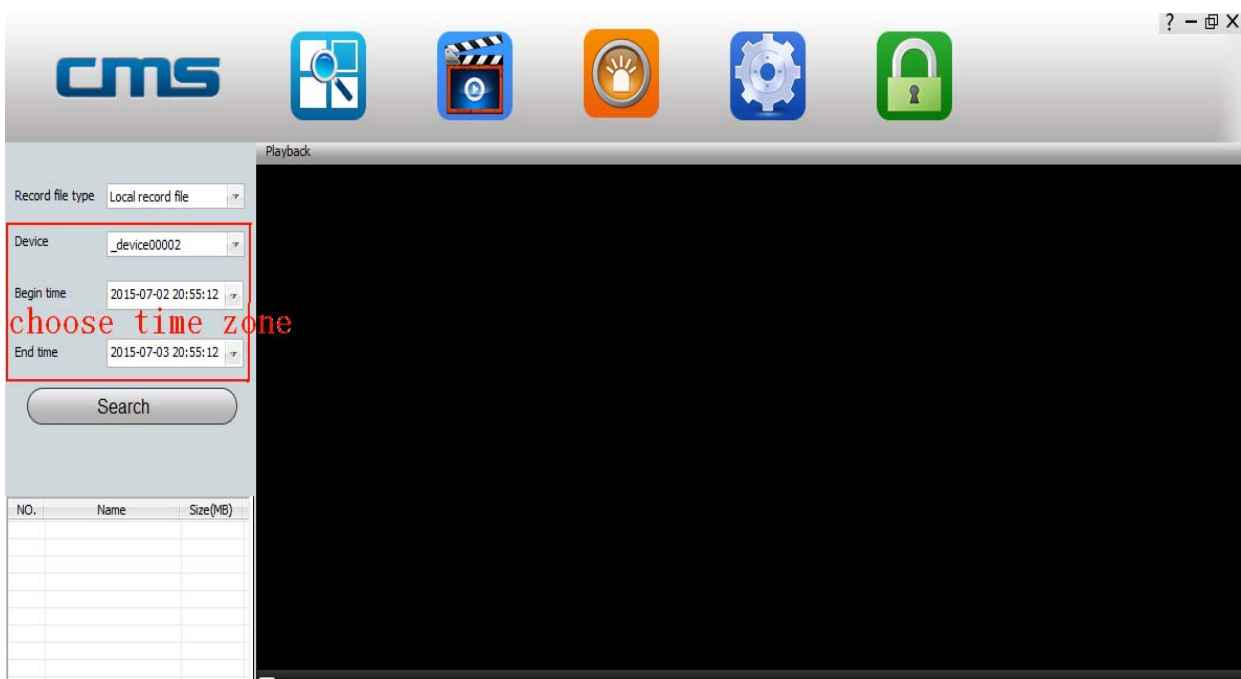
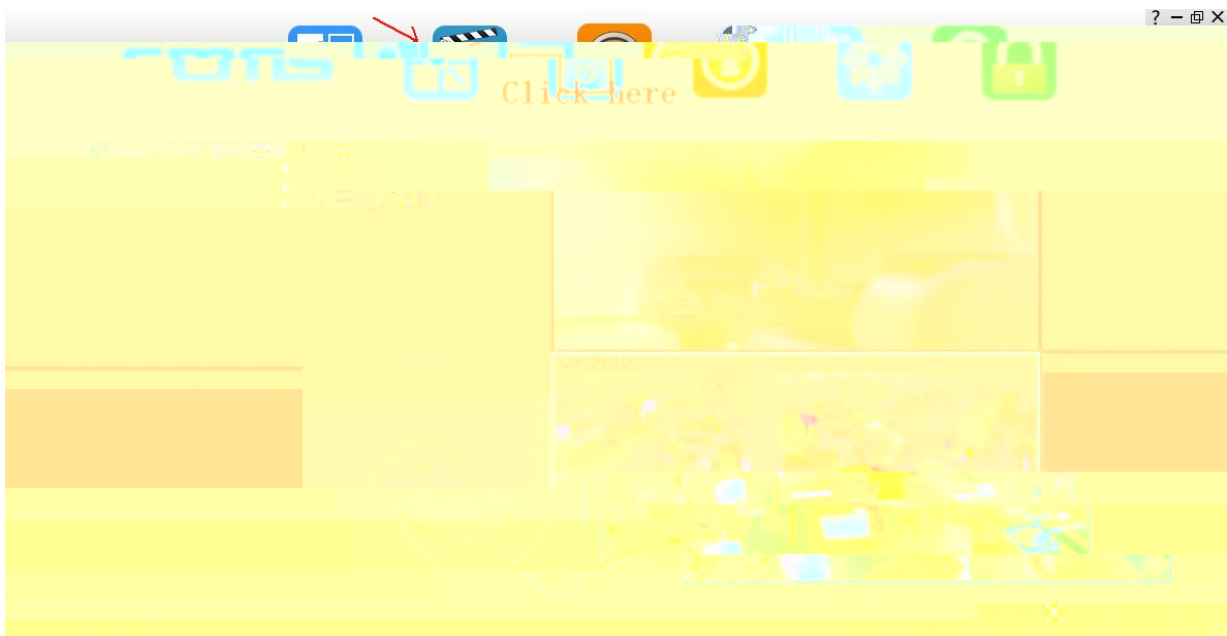
6、 The video setting in PC.

1) 、 Video: this device can store the video in the computer's hard disk, right click on the monitor screen ,select "start video" (note: be sure only in the computer monitoring condition ,the video can be stored in the computer's hard disk)



2) 、 playback: this device can playback the video from computer, open the CMS software, click on the replay button  , choose "playback" , user can find the playback files according to the date, then play it directly .

(note: the video in computer hard disk only can be played in PC ,does not support playing in mobile)



V、Restore the factory default settings

Reset will erase all user settings, including user information.